

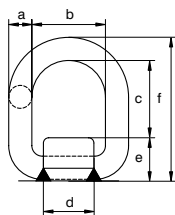


Green Pin® Weld-On Transport Ring

Weld-on transport ring



PAS



- **Material:** base: mild steel, ring: alloy steel, grade 8, quenched and tempered
- **Safety factor:** MBL equals 4 x WLL
- **Finish:** painted red or white
- **Temperature range:** -40°C up to +200°C
- **Certification:** 2.1 2.2 3.1 CE
- **Note:** welding must be done in accordance with DIN 5817 resp. 15429, by a qualified welder according to EN 287-1

working load limit	diameter	width inside	length inside	length base	height base	length	weight each
t	a mm	b mm	c mm	d mm	e mm	f mm	kg
1.2	13	40	42	35	28	83	0.4
3.2	18	45	48	42	33	99	0.77
5.4	22	55	57	49	42	121	1.42
8.2	26	70	67	64	50	143	2.5
12.8	28	85	90	78	55	173	3.7
15.5	34	99	93	90	63	190	5.67